

DOI: 10.16359/j.cnki.cn11-1963/q.2020.0077; : K871.11 : A . ' 1000-3193(2022)01-0121-14

1,2 3 1,4 3,5
1. 100875 2. 730070 3. 730000
4. 210008
5. 200433
2018
14 15 16 m²

MIS5

A preliminary report of the 2018 excavation at the Loufangzi site in Huan county, Gansu province

MU Zhanxiong^{1,2}, CHEN Guoke³, DU Shuisheng^{1,4}, WANG Hui^{3,5}

1. Institute of History, Beijing Normal University, Beijing 100875; 2. Institute of History and Culture, Northwest Normal University, Lanzhou 730070; 3. Gansu Provincial Institute of Cultural Relics and Archaeology, Lanzhou 730000; 4. State Key Laboratory of Palaeobiology and Stratigraphy(Nanjing Institute of Geology and Palaeontology, CAS), Nanjing 210008; 5. Institute of Scientific Archaeology, Fudan University, Shanghai 200433

Abstract: The Loufangzi site, located in the eastern Gansu province, is an open-air site dated at the middle paleolithic. In 2018, excavations were carried out on the lower part of the cultural layer (Layer 14 and 15) of the Loufangzi site, and plenty of artifacts and animal bones were discovered in 16 m². Lithic raw materials were made of gravel from river nearby, which were mainly quartz sandstone and siliceous limestone. The lithic assemblage includes cores, flakes, tools, chunks etc. The principle flaking technique was direct hard-hammer percussion. Most of tools were retouched by hard-hammer. The typological and technological characteristics of

2020-04-24

2020-10-16

2019

193108

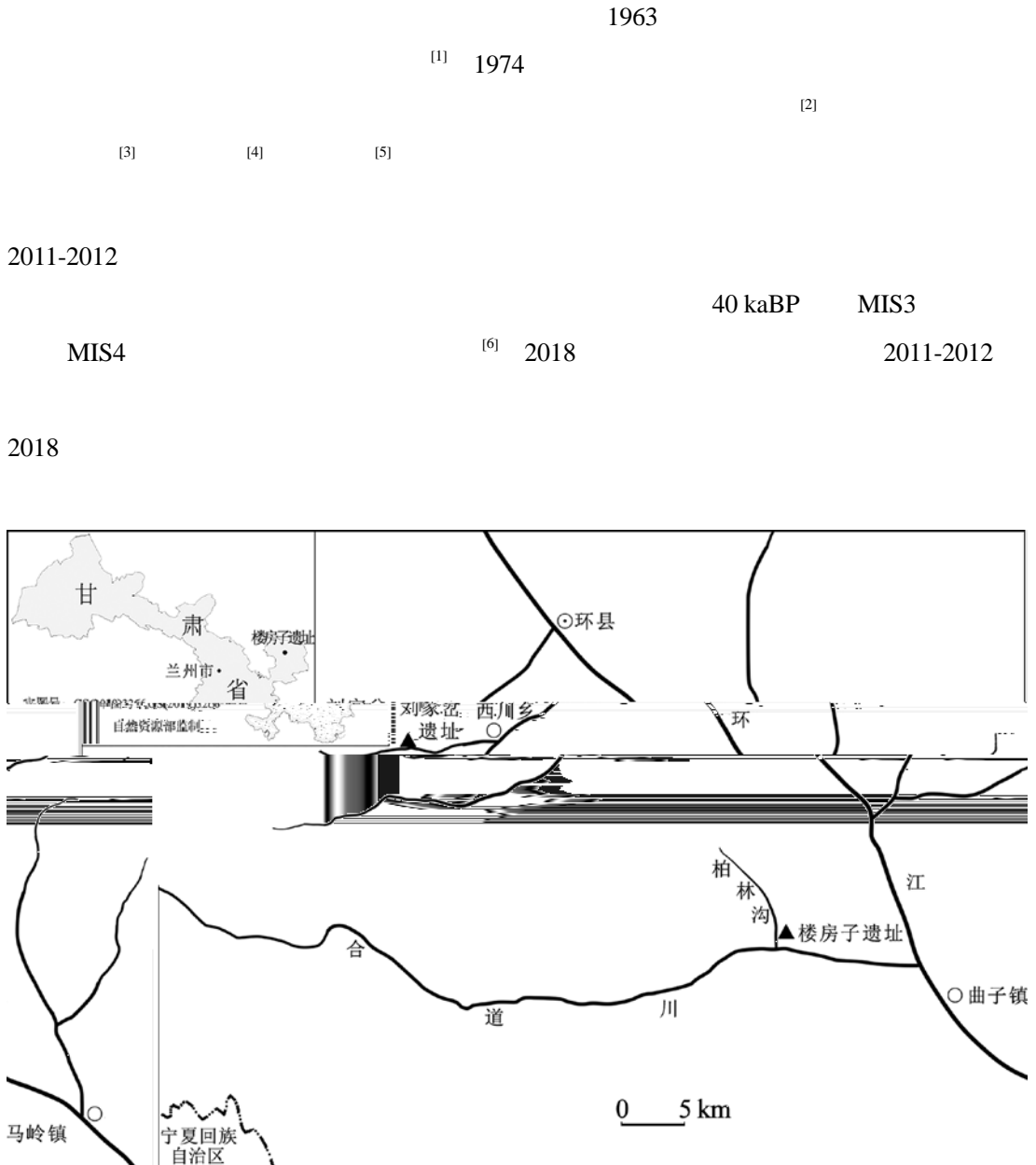
E-mail: 394324536@qq.com

E-mail: ssdu@bnu.edu.cn

Citation: Mu ZX, Chen GK, Du SS, et al. A preliminary report of the 2018 excavation at the Loufangzi site in Huan county, Gansu province[J]. Acta Anthropologica Sinica, 2022, 41(1): 121-134

artifacts from the lower cultural layer of the Loufangzi site belonged to the small tool technology. Combined with the stratum accumulation and related pollen analysis, we preliminarily think that the age of lower cultural layer of the Loufangzi site is equivalent to MIS5.

Keywords: Gansu; Loufangzi; Middle Paleolithic; Small stone artifacts; Steep working



1
Fig.1 Geographic location of the Loufangzi site

		%			
		1 km	36°20'47" N	107°20'54" E	
1290 m		16 m ²	65 cm	14 15	2011-2012
	14.9 m				
1	0.2 m				
2	0-3 m				3
3	3.6 m	7		6	
4	1.7 m				
			4.5 m		4
5	2.3 m				8
	0.05m	15			
6	1.3 m			16	1
		4.9			
7	0.7 m				
	0-0.1 m	74		111	
8	0.4-0.5 m				
		69		121	
9	0.6 m				309
1208					
10	0.8 m				110
192					
11	0.3-0.5 m			0.1-0.2 m	
	0.2-0.3 m			208	130
12	0.5-0.6 m				
				215	52
13	0.7 m			474	194
14	1-2 m				
		5130			2259
2871		2768		2362	
15	0-0.3 m				
22733		2135		20598	1597
21136					
16					

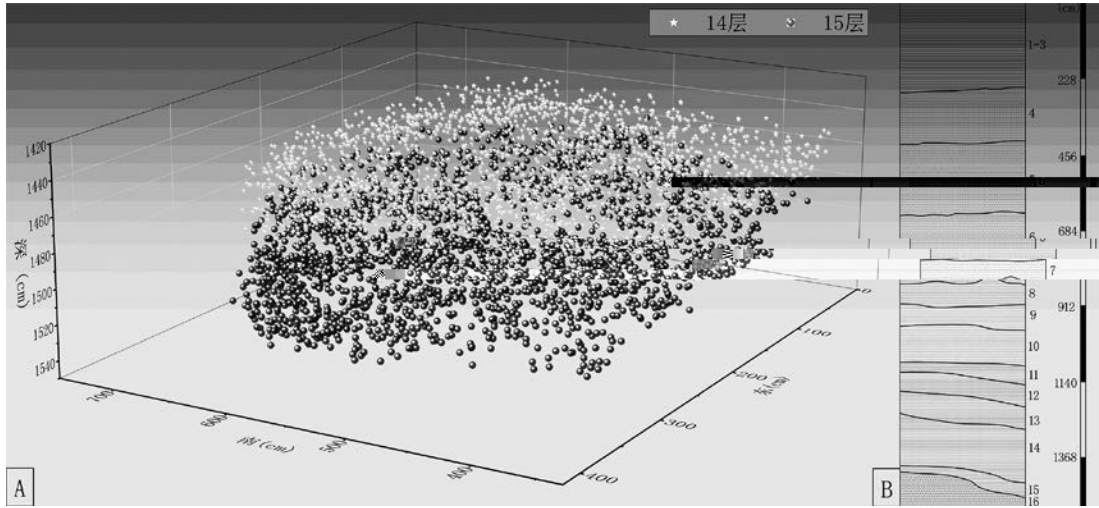
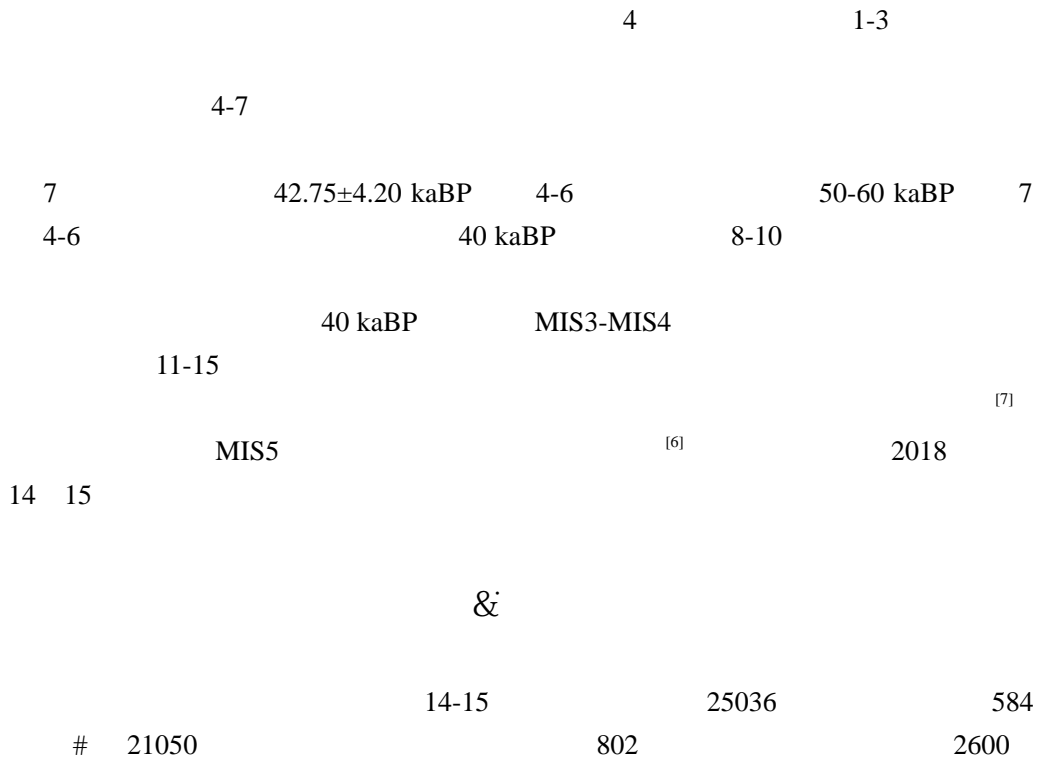


Fig.2 Schematic section of the east wall (B) and 3D view of specimen unearthed from the lower cultural layer (14-15) (A) of the Loufangzi site



682			<i>n</i> =429; 62.90%	<i>n</i> =157;
23.02%		<i>n</i> =59; 8.65%	<i>n</i> =27; 3.96%	
<i>n</i> =8; 1.17%		<i>n</i> =1; 0.15%	<i>n</i> =1; 0.15%	<i>n</i> =380;
55.72%	<i>n</i> =291; 42.67%		<i>n</i> =11; 1.61%	
	44.93 mm	47.08 mm	39.97 mm	153.57 g
36°	86°			136°

1

Tab.1 Stone artifacts from lower cultural layer (unit: *n*)

Layers	Cores

			3	3		
	490		248		252	
	<i>n</i> =170		<i>n</i> =51		<i>n</i> =14	<i>n</i> =10
<i>n</i> =3					<i>n</i> =100	
	<i>n</i> =101		<i>n</i> =51			
	96		77		19	
		<i>n</i> =54	<i>n</i> =12		<i>n</i> =11	3
		<i>n</i> =13		<i>n</i> =5		
<i>n</i> =1						
	86					
	HL2018TN4W3-15(3):83					
	100.32 mm	45.45 mm	45.73 mm	343.15 g	3: 4	
			30%			
	2			10%		3
	32.78 mm	41.45 mm			8.88 mm	8.57 mm
	65°~79°					
	HL2018TN6W3-15(3):480					
	47.54 mm	66.7 mm	47.8 mm	204.83 g	3: 8	
				80%	50%	
						60%
	10			37.81 mm	23.42 mm	
	8.77 mm	7.35 mm		87°~104°		
	HL2018TN7W2-14(3):643					
	59.75 mm	44.52 mm	28.34 mm	71.72 g	3: 3	
			100%			
				50%		7
	29.7 mm	17.84 mm			5.64 mm	8.57 mm
	62°~85°					
	HL2018TN5W4-14(4):12					
	90.85 mm	82.37 mm	67.35 mm	459.27 g	3: 5	
			100%	50%		
					80%	
		48.87 mm	30.6 mm			12
						9.62 mm
11.65 mm		69°~103°				

120

n=85; 70.83%



3

- | | | | | |
|----------------------|---|---------------------|------------------------|----------------------|
| 1 2. | (HL2018HLTN4W314(2):283, HL2018TN5W314(4):44) | 3 5. | (HL2018TN7W214(3):643, | |
| HL2018TN5W414(4):12) | 4. | HL2018TN4W315(3):83 | 6. | HL2018TN6W215(2):317 |
| 7. | HL2018TN5W314(3):44 | 8. | HL2018TN6W315(3):480 | |

	1903		$n=1454; 76.41\%$		$n=167; 8.78\%$
	$n=85; 4.47\%$	$n=84; 4.41\%$	$n=33; 1.73\%$	$n=14; 0.74\%$	
	$n=7; 0.37\%$	$n=15; 0.79\%$		$n=43; 2.26\%$	
	$n=1; 0.05\%$				
			5		
			31.12 mm	27.34 mm	14.51 mm
				$n=903; 47.45\%$	25.79 g
	$n=962; 50.55\%$				$n=38; 2.0\%$
3			92.16%		
	1454	750	704		
	1050				371
	33	3			
	HL2018TN6W2-15(4):190				42.86
mm	51.16 mm	17.6 mm	44.5 g	4: 1	85%
				94.43%	74°
	HL2018TN6W2-15(4):194				54.69
mm	46.43 mm	18.79 mm	59.22 g	4: 2	
			50%		
	100%	81°		58.7 mm	6.01 mm
	HL2018TN7W3-14(2):X1				30.63
mm	38.54 mm	10.56 mm	18.17 g	4: 3	
					100%
71°					
	167	3			
					86
	81		21.8 mm	74.1 mm	6.6 mm
	HL2018TN7W2-14(3):689				22.51 mm
	59.01 g	4: 4		51.34 mm	46.48 mm
	3.71 mm		80%		
			59.76%	78°	

1) HL2018TN7W3-14(2):X1

5

Tab.5 Characteristics of tools retouched edges from lower culture

	Scrapers	Spur-like tool	Notches	Points	Denticulates	Borers	Becs	Choppers
	1443	160	96	135	33	4	8	32
	172	17	9	16	1	14	1	5
	92	19	9	7	2	2	0	3
	91	13	7	7	0	3	1	0
	0	0	0	0	0	0	0	3
	807	86	53	75	18	12	4	26
	784	92	56	67	10	12	3	13
	383	37	16	29	9	1	3	4
	54	7	2	3	2	2	1	0
	9	1	0	0	0	0	0	0
50%	34	0	26	14	1	6	0	1
50%-75%	243	35	36	33	7	7	1	9
75%-99%	126	30	12	10	4	2	0	3
100%	1490	159	56	117	24	12	10	30
50°	18	0	0	0	0	0	0	0
50°-80°	1096	82	53	80	23	9	4	21
80°	832	139	79	94	13	14	7	22

6

Tab.6 The features of retouched scars from the tools

	Scrapers	Spur-like tool	Notches	Points	Denticulates	Borers	Becs	Choppers
	122	5	3	18	0	2	0	0
	853	48	50	79	1	10	7	8
	668	103	69	38	18	7	2	20
	250	67	8	39	17	8	2	15
	113	15	6	13	3	1	1	4
	857	74	46	56	18	17	0	7
	919	134	78	103	15	9	10	32
	4	0	0	2	0	0	0	0
	140	11	3	4	10	3	0	1
	154	14	7	14	3	1	0	4
	530	43	7	41	7	4	3	8
	1066	154	109	111	16	19	8	30
	3	1	4	4	0	0	0	0
	2	0	0	0	0	0	0	0
	4	1	4	7	0	0	0	0
	1670	211	119	157	28	25	10	42
	111	4	2	6	2	2	1	0
	106	7	5	4	6	0	0	1

85			11					
			40		45			
99			14.21 mm		55.95 mm		6.46 mm	
	2.34 mm		10.16 mm		0.93 mm			
32.68%	58.09%		16.82%					
	HL2018TN7W1-14(2):515				57.27 mm		45.28	
mm	31.48 mm		76.84 g	4: 7				
49.53%		76°			20.33 mm		3.77 mm	
	0.37						74.98%	
	84°							
	84		1		47		35	,2
				53			31	
		73.48°		98°	51°			
	HL2018TN5W2-14(2):X7					28.52mm	39.84mm	
9.33mm		9.86 g	4: 8					
	62°			100%		67°	53°	
	HL2018TN7W2-15(1):3					79 mm	66.47	
mm	31.42 mm		207.81 g	4: 9		80%		
100%	77.73%	100%		84°	83°	83°		1
	79°			2		80°		
	33							
			19		14			4.66
			1.62 mm		3.41 mm		0.67 mm	
	0.66 mm		1.68 mm		0.2 mm	,	8.22 mm	
	20.78 mm		2.9 mm					



4

Fig.4 Selected retouched tools from the lower cultural layer of Loufangzi site

- | | | | | | |
|----|-----------------------|---|-------------------------|-----------------------|-------------------------|
| 1 | 3. | HL2018TN6W2-15(4):190, HL2018TN7W3-14(2):X1 | 2. | HL2018TN6W2-15(4):194 | |
| 4. | HL2018TN7W2-14(3):689 | 5. | HL2018TN7W2-14(2):186-1 | 6. | HL2018TN7W1-14(2):498-2 |
| 7. | HL2018TN7W1-14(2):515 | 8. | HL2018TN5W2-14(2):X7 | 9. | HL2018TN7W2-15(1):3 |
| | | | | 10. | HL2018TN7W2-15(2):X30 |
| | | | | 11. | HL2018TN4W3-15(4):56 |

HL2018TN7W2-14(2):186-1

34.87 mm 28.93 mm 18.42 mm 21.66 g 4: 5
 88.95% 95°
 5 1.86 mm 0.53 mm 9.12 mm 6.29 mm
 6.55 mm 7.37 mm

14 5 8 1

67.08° 79° 52°
 39.39 mm 36.61 mm

HL2018TN7W2-15(2): X30

24.83 mm 27.96 g 4: 10
 79° 81°
 35.97% 20.75%

7 5 2

80°

HL2018TN7W1-14(2):498-2

29.16 g 4: 6 37.31 mm 29.8 mm 16.15 mm
 66° 95°
 100%

43 35 8 63.68 mm
 52.07 mm 30.93 mm 348.69 g
 202.45 mm 185.16 mm 109.27 mm 6000 g
 22.17 mm 24.05 mm 14.12 mm 9.19 g
 77.76°

HL2018TN6W2-15(2):317

62.55 mm 41.64 mm 24.43 mm 88.46 g 3: 6
 77° 71.2%

1 HL2018TN4W3-15(4):56

80.37

mm 98.18 mm 93.44 mm 411.27 g 4: 11

